

# EXHIBIT "B" CONDOMINIUM PLAT BOOK PAGE SHEET No. of STRANDVIEW TOWER CONDOMINIUM

INK ENGINEERING, INC.  
200 PROFESSIONAL PL.  
N. FORT MYERS, FLORIDA

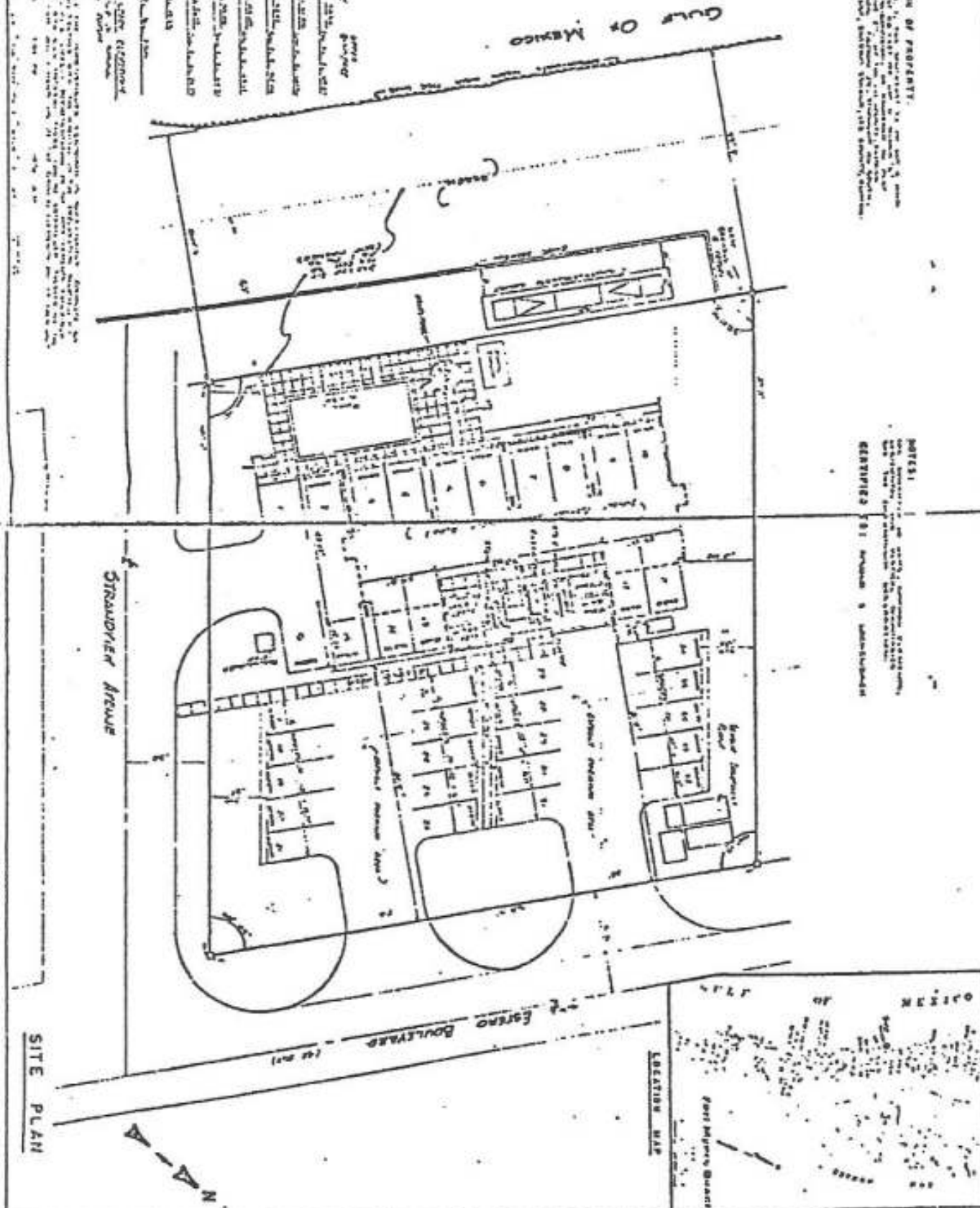
**DESCRIPTION OF PROPERTY:**  
This is a plat of a condominium project consisting of 100 units, located in the City of Fort Myers, Florida, and is subject to the provisions of the Florida Condominium Act, Chapter 718, Florida Statutes, and the rules and regulations of the Florida Department of Banking and Finance, Chapter 61B, Florida Administrative Code.

**NOTES:**  
1. The boundaries of the project are shown by a dashed line.  
2. The boundaries of the individual units are shown by a solid line.  
3. The boundaries of the common areas are shown by a dotted line.

Unit	Area	Volume
101	1,200 sq. ft.	1,200 cu. ft.
102	1,200 sq. ft.	1,200 cu. ft.
103	1,200 sq. ft.	1,200 cu. ft.
104	1,200 sq. ft.	1,200 cu. ft.
105	1,200 sq. ft.	1,200 cu. ft.
106	1,200 sq. ft.	1,200 cu. ft.
107	1,200 sq. ft.	1,200 cu. ft.
108	1,200 sq. ft.	1,200 cu. ft.
109	1,200 sq. ft.	1,200 cu. ft.
110	1,200 sq. ft.	1,200 cu. ft.

**CERTIFICATION:** I, the undersigned, being a duly licensed Professional Engineer in the State of Florida, do hereby certify that the foregoing is a true and correct copy of the original plat as filed in the public records of the State of Florida.

DATE: 10/1/76  
INK ENGINEERING, INC.  
N. FORT MYERS, FLORIDA



SITE PLAN

DATE: September 1976  
JOB NO. 2547  
SCALE: 1" = 20'